



LIGHTINGEUROPE
THE VOICE OF THE LIGHTING INDUSTRY

OURANIA GEORGOUTSAKOU, *SECRETARY-GENERAL*

THE ROLE OF BETTER LIGHTING IN ENSURING AN
ADEQUATE INDOOR ENVIRONMENTAL QUALITY



**SUSTAINABLE
ENERGY WEEK**

An initiative
of the  European
Commission

22-26 JUNE 2020
BEYOND THE CRISIS: CLEAN ENERGY FOR GREEN RECOVERY AND GROWTH
#EUSEW2020



LIGHTINGEUROPE
THE VOICE OF THE LIGHTING INDUSTRY

LIGHTING CONTRIBUTES TO THE ENERGY EFFICIENCY OF BUILDINGS



The maximum EU-28 **total annual electricity savings** for optimized lighting system designs with controls (depending on the reference light source scenario) are:



(for reference: EcoDesign (EC)245/2009 on tertiary sector lighting products saving potential is **38 TWh/year** in 2020)



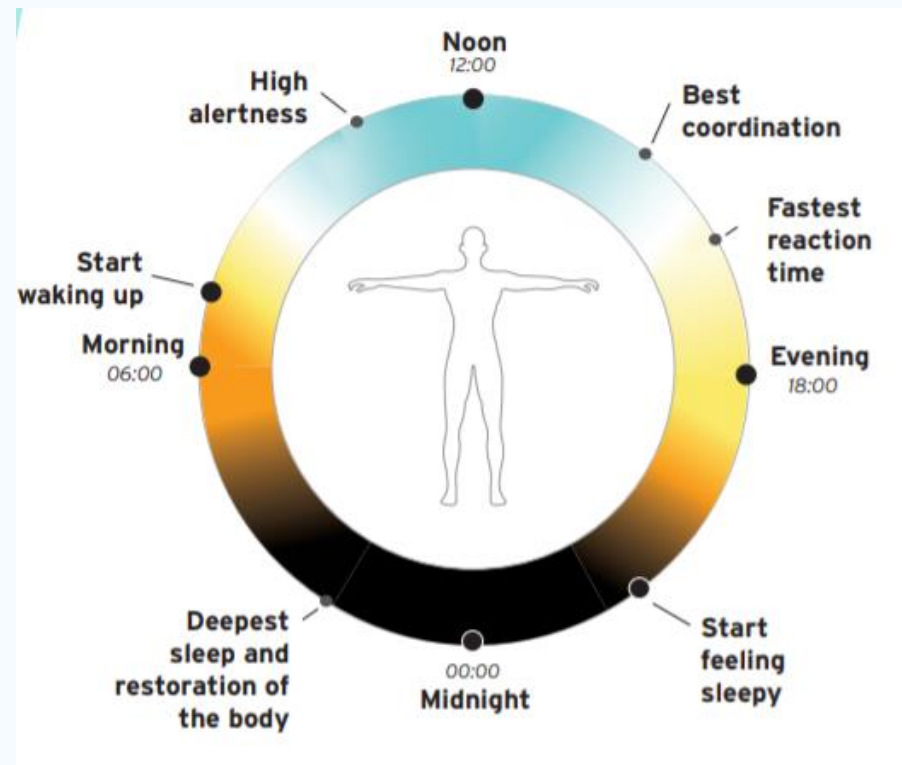
**SUSTAINABLE
ENERGY WEEK**

An initiative of the  European Commission

22-26 JUNE 2020
BEYOND THE CRISIS: CLEAN ENERGY FOR GREEN RECOVERY AND GROWTH
#EUSEW2020

LIGHTING CONTRIBUTES TO THE WELL-BEING OF OCCUPANTS

The Nobel Prize in Physiology or Medicine 2017 helped to explain the mechanism by which light can synchronize the 24-hour body clock.

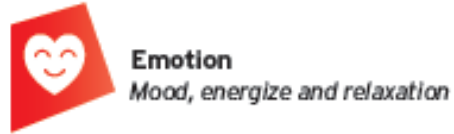
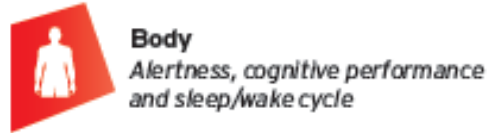


BETTER LIGHTING THROUGH HUMAN-CENTRIC LIGHTING

Human Centric Lighting

Supports health, well-being and performance of humans by combining **visual, biological and emotional benefits of light**

Light has an effect on



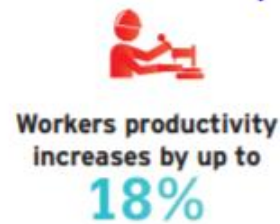
We need the **right light** for our activities at the **right place** at the **right time**



Each lighting application has its own specific needs



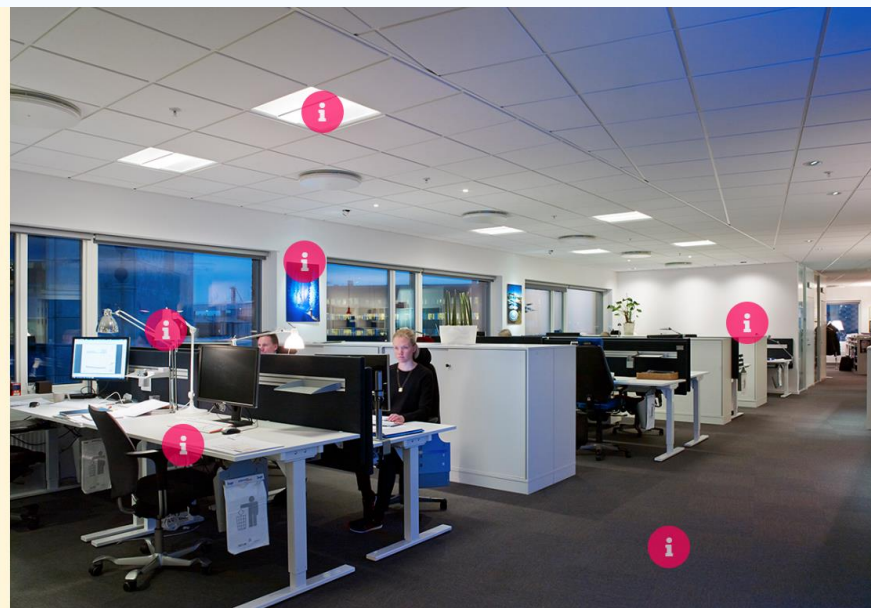
Benefits for people in healthy buildings due to lighting



BETTER LIGHTING THROUGH HUMAN-CENTRIC LIGHTING

Office

ÅF, Malmö, Sweden



School

Fache-Thumesnil, France



For more information and other applications: <https://www.valueoflighting.eu/applications.html>

BUILDINGS OF THE FUTURE ARE ENERGY EFFICIENT AND HEALTHY!

Key recommendations

Set **mandatory minimum requirements for IEQ, including lighting**
Instructions for lighting in EN12464-1

Set **requirements to ensure the smartness of healthy buildings** and the smart readiness indicator (SRI)

Access to public financing should be subject to **fulfilling certain conditions – improvement of buildings' smartness and IEQ**

e.g. for lighting:

- Compliance with EN12464-1
- Minimum SRI level

Ensure the **enforcement of Member States' Long-term Renovation Strategies (LTRSs)**



**SUSTAINABLE
ENERGY WEEK**

An initiative of the  European Commission

BEYOND THE CRISIS: CLEAN ENERGY FOR GREEN RECOVERY AND GROWTH

22-26 JUNE 2020

#EUSEW2020